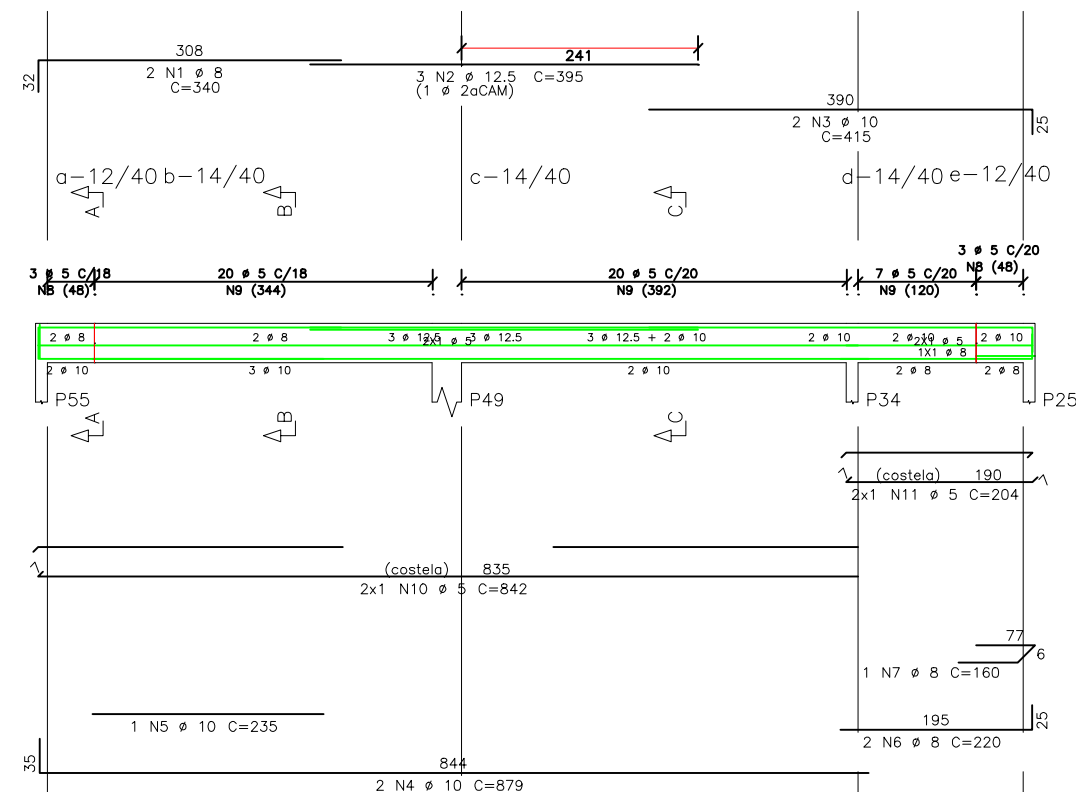


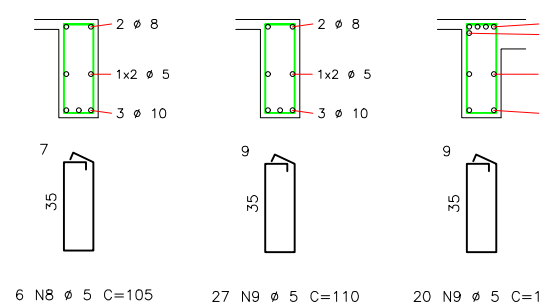
V11



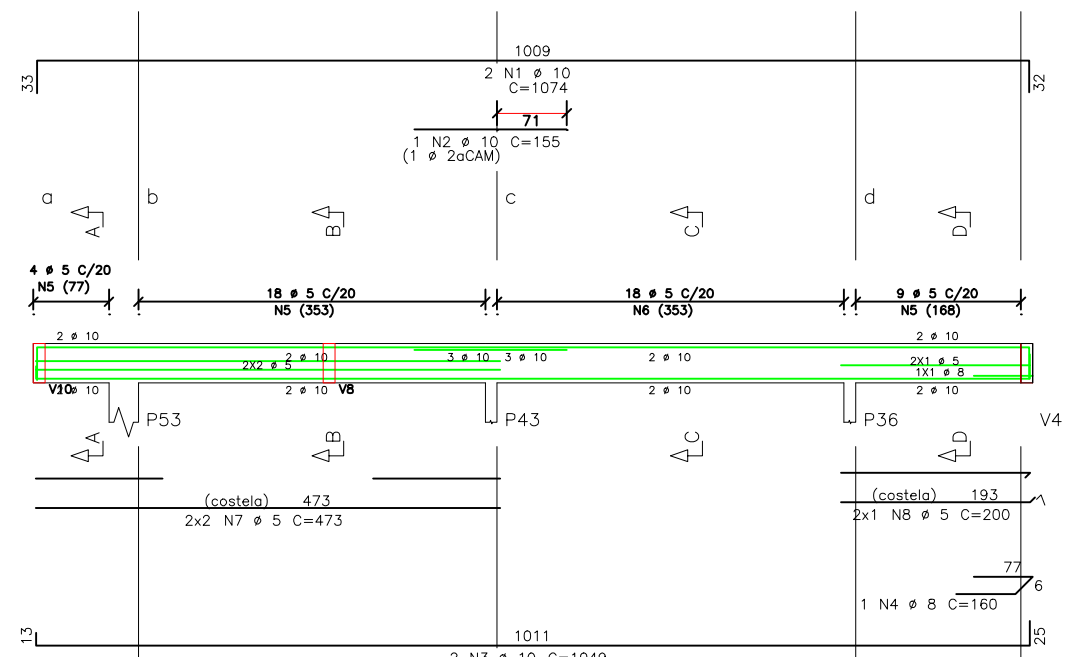
Corte A

Corte B

Corte C



V13 12/40

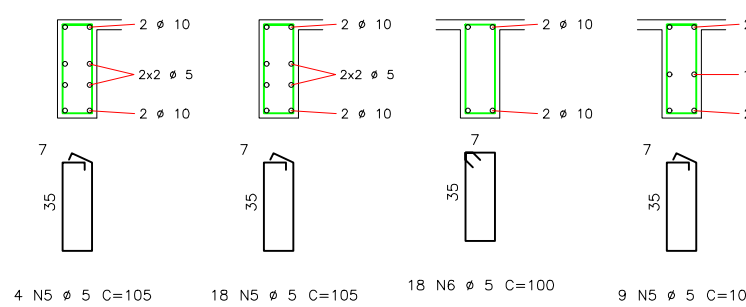


Corte A

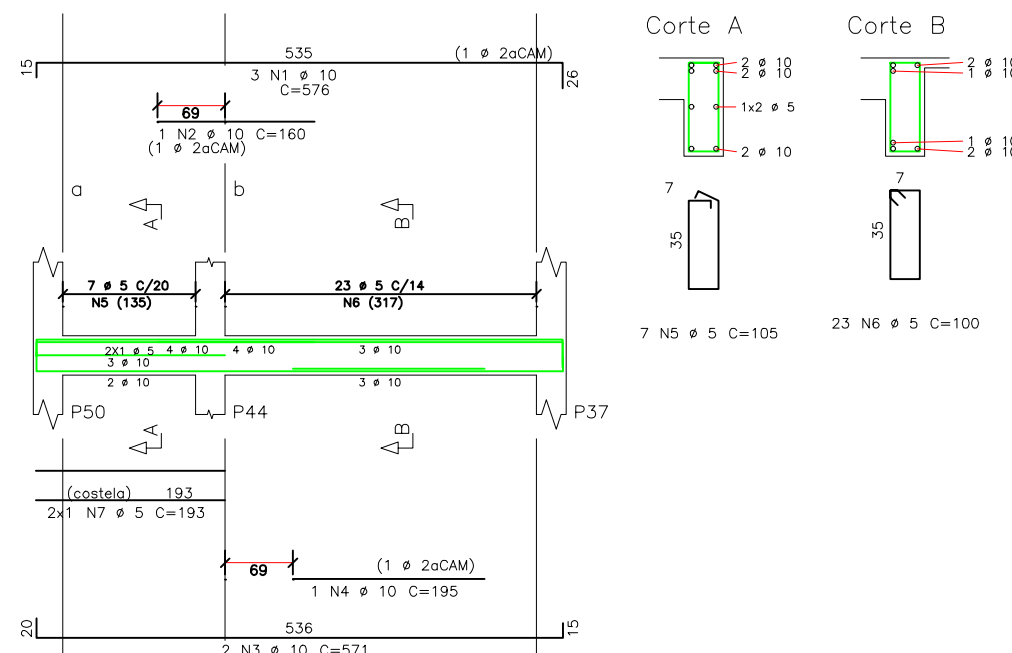
Corte B

Corte C

Corte D

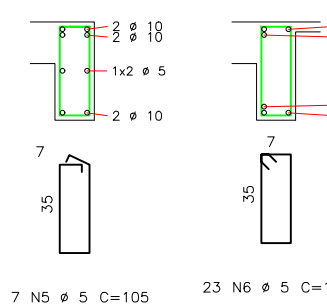


V14 12/40

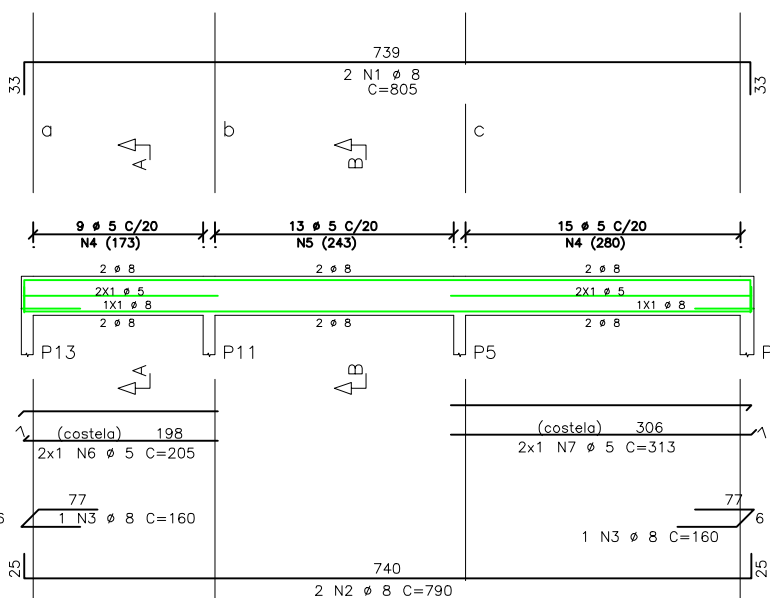


Corte A

Corte B

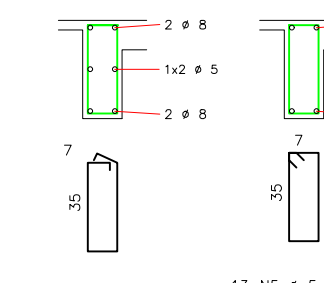


V15 12/40

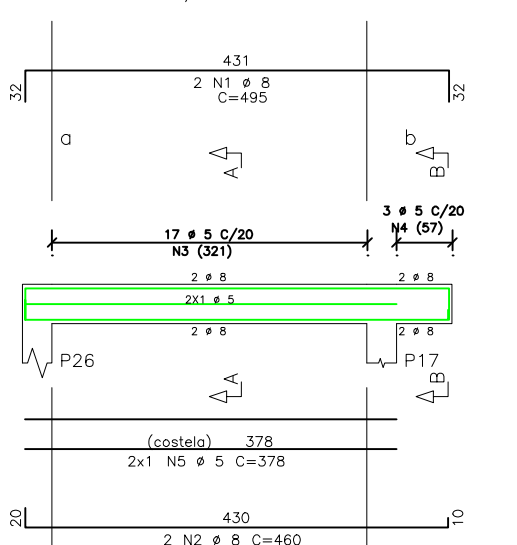


Corte A

Corte B

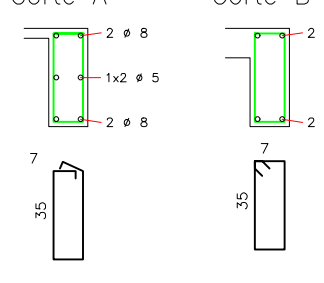


V12 12/40

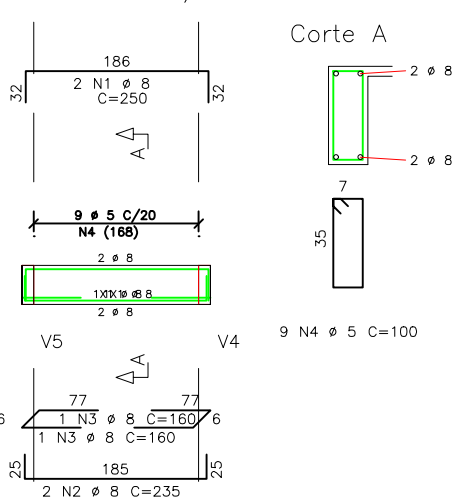


Corte A

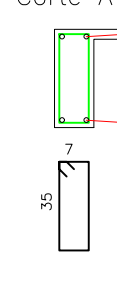
Corte B



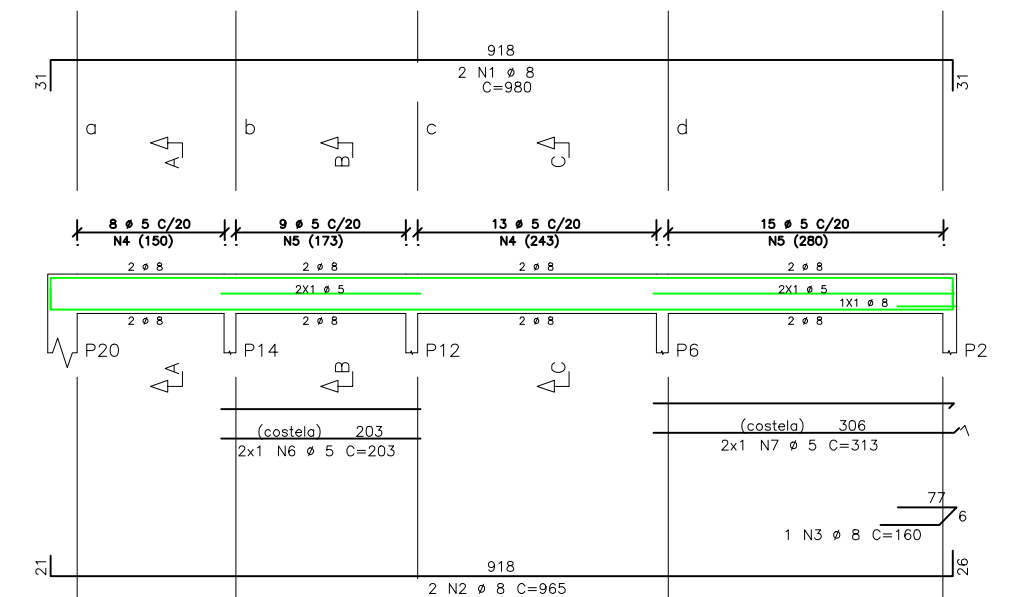
V20 12/40



Corte A



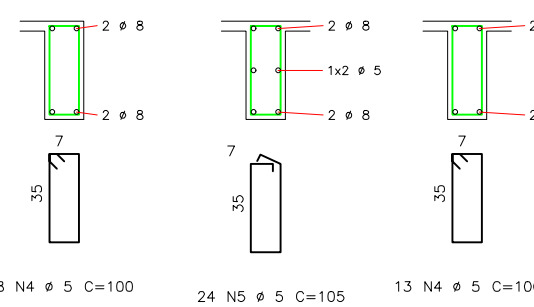
V16 12/40



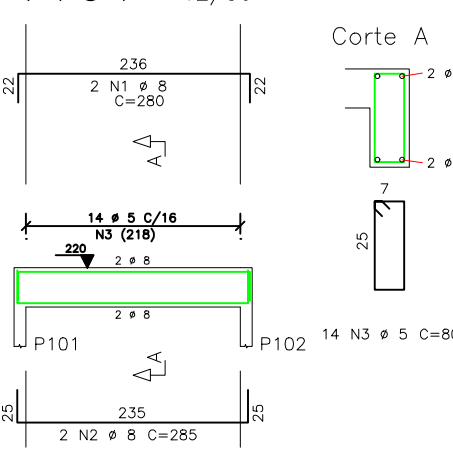
Corte A

Corte B

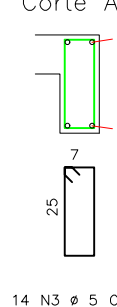
Corte C



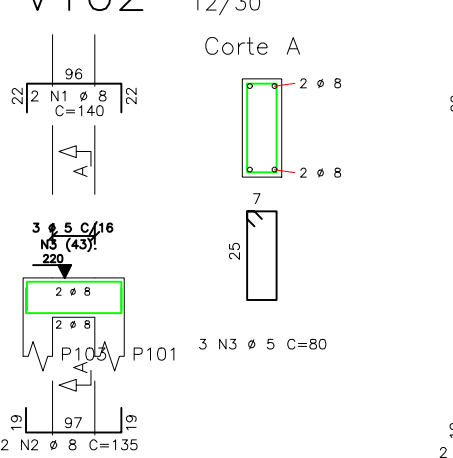
V101 12/30



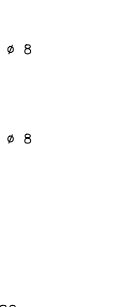
Corte A



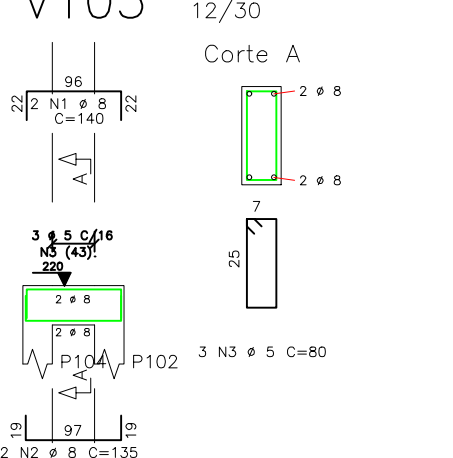
V102 12/30



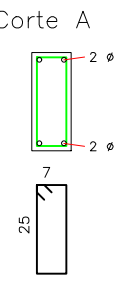
Corte A



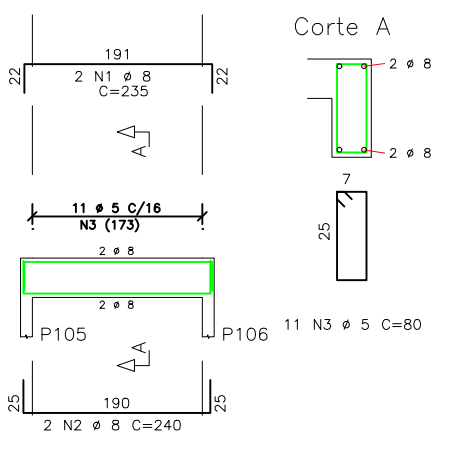
V103 12/30



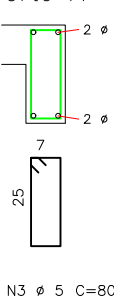
Corte A



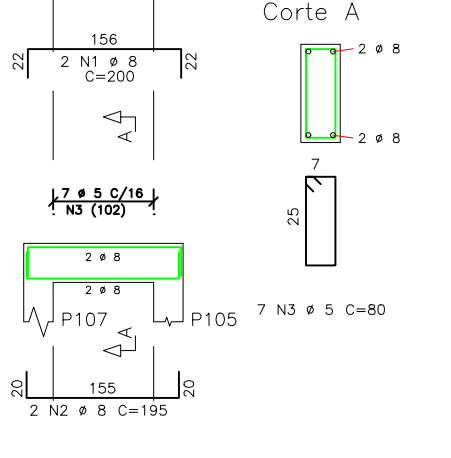
V104 12/30



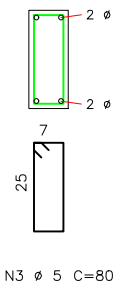
Corte A



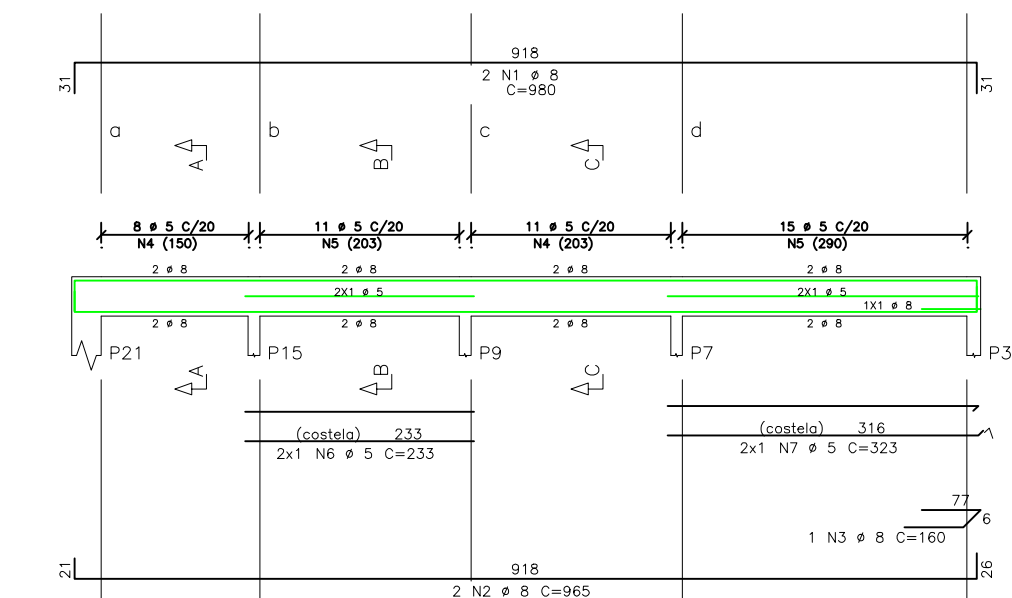
V105 12/30



Corte A



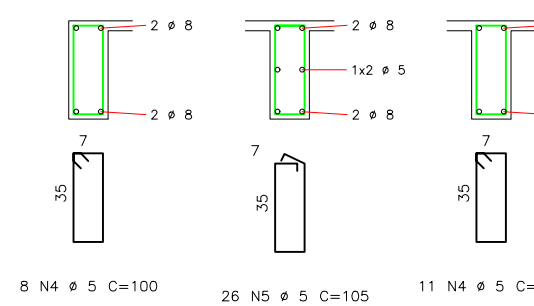
V17 12/40



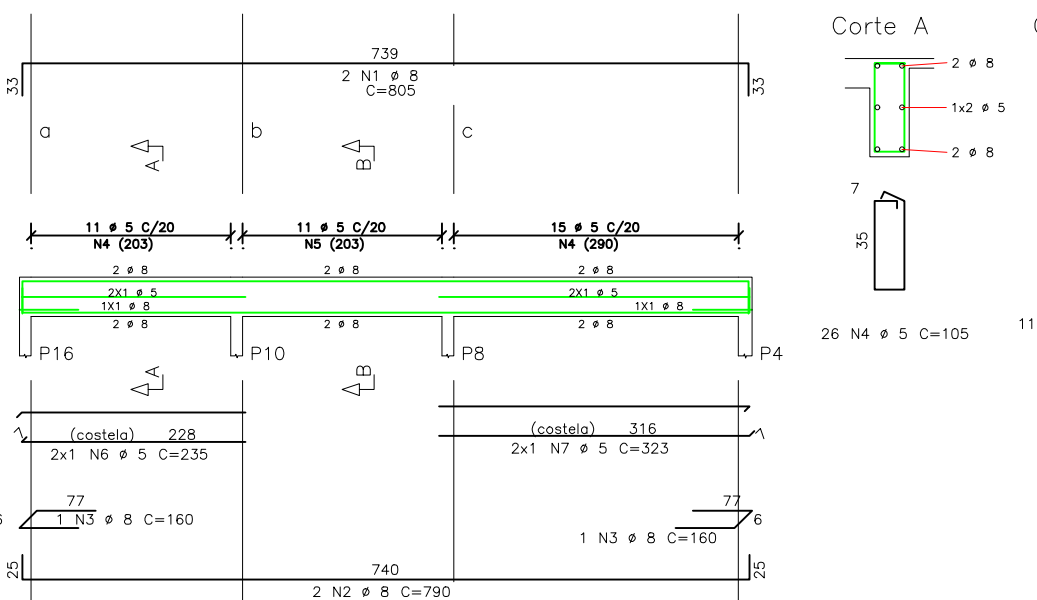
Corte A

Corte B

Corte C

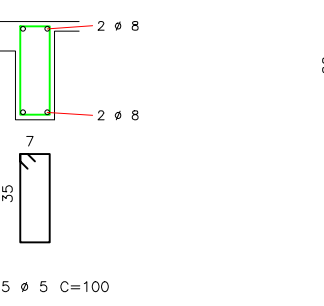


V19 12/40

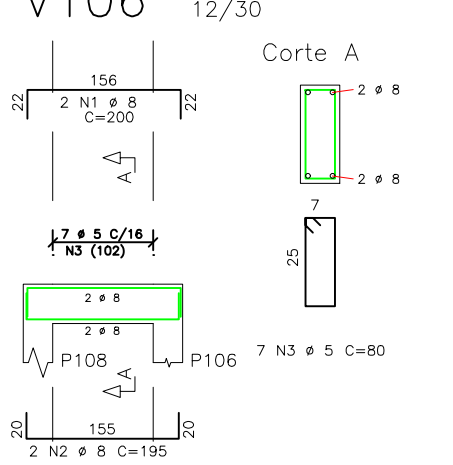


Corte A

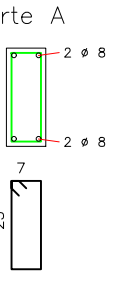
Corte B



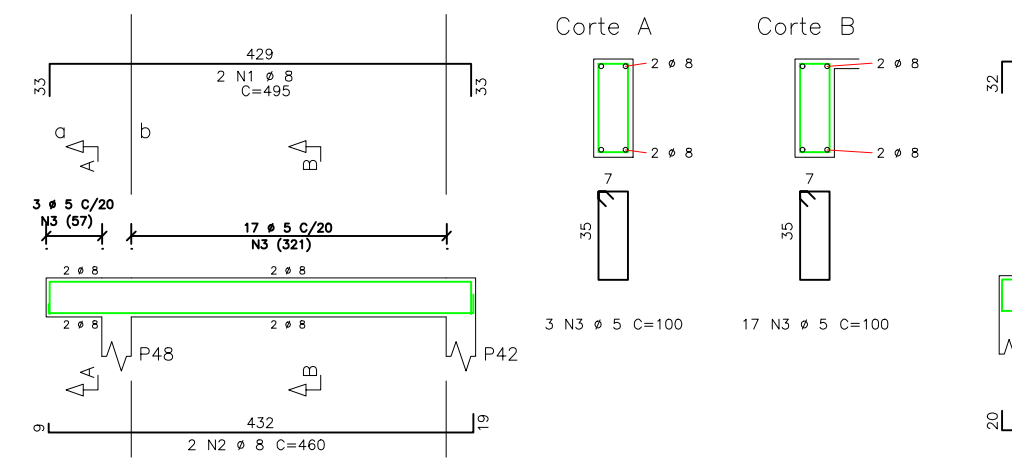
V106 12/30



Corte A

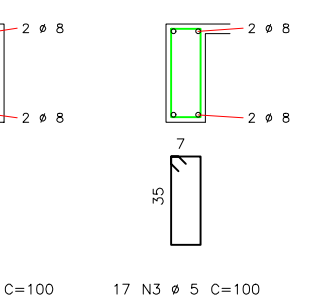


V21 12/40

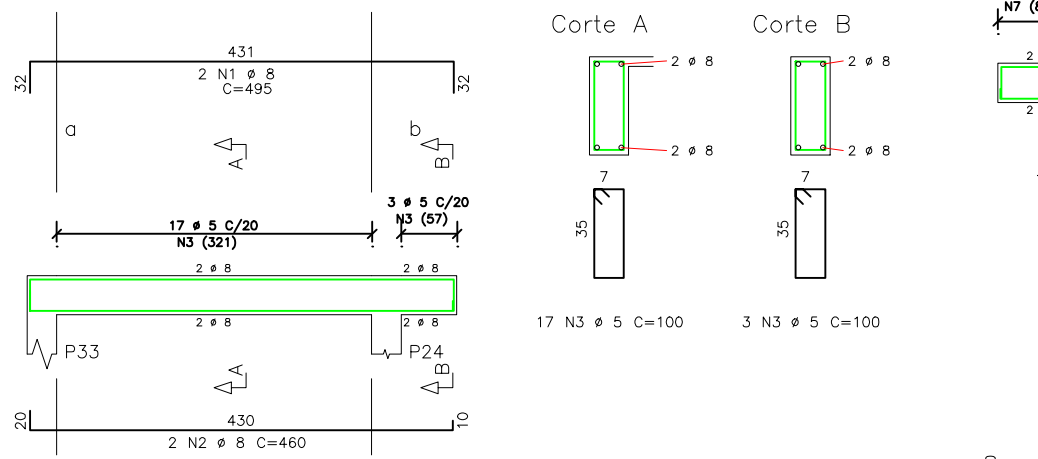


Corte A

Corte B

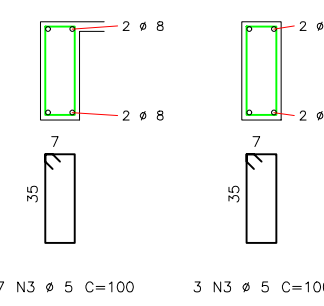


V22 12/40

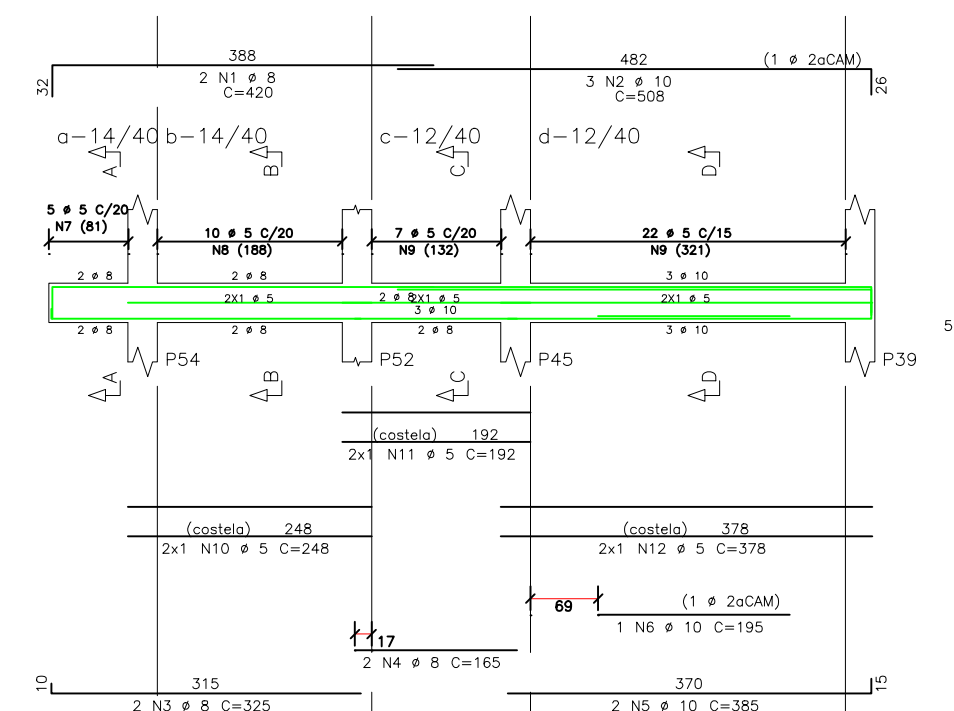


Corte A

Corte B



V18

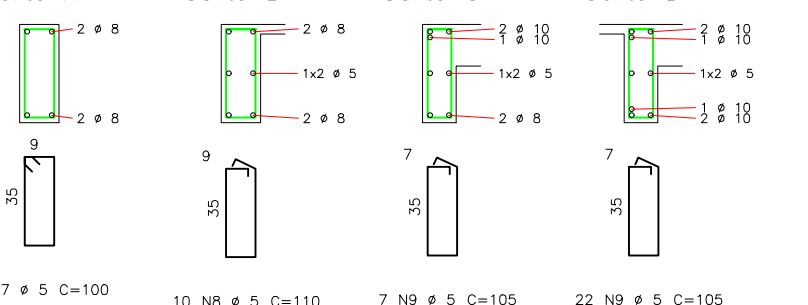


Corte A

Corte B

Corte C

Corte D



CONCRETO		CARGAS PARA DIMENSIONAMENTO	
Fck=	25 MPa	A/C M _{ax} =	0.60
E _{c28} =	28 GPa	CARGA UTILIZAÇÃO	Kg/m ²
MATERIAL		REVESTIMENTO PISO	Kg/m ²
REVESTIMENTO :		cm	
MATERIAL DE ENCHIMENTO:		Kg/m ³	
REVESTIMENTO :		cm	



GOVERNO DO ESTADO DO PARANÁ
SEI - SECRETARIA DE INFRAESTRUTURA E LOGÍSTICA
PARANÁ EDIFICAÇÕES
GÊNCIA DE PROJETOS

PROFESSOR:	GOVERNO DO ESTADO DO PARANÁ	WAGNER
COORDENADOR:	GOVERNO DO ESTADO DO PARANÁ	ESCRITÓRIO REGIONAL
UNIDADE DE SAÚDE DA FAMÍLIA - PORTE 1 / PSF DO RESIDENCIAL JULIA LORIAN		
LOCAL:	PARANÁ, 07	PSF
ENDEREÇO:	PARANÁ, 07	
AUTOR DO PROJETO/REGISTRO PROJ:	JOSÉ L. BORDINI / ORA 13410-PM	PROJETO
AUTOR DO PROJETO/REGISTRO PROJ:	JOSÉ L. BORDINI / ORA 13410-PM	ESTRUTURAL
RESPONSÁVEL TÉCNICO/REGISTRO PROJ:	JOSÉ L. BORDINI / ORA 13410-PM	ARM. VIGAS DO TETO
DESENHO:	DESENHO	DESENHO
VERIFICAÇÃO:	VERIFICAÇÃO	VERIFICAÇÃO
APROVAÇÃO:	APROVAÇÃO	APROVAÇÃO

EST
10/11